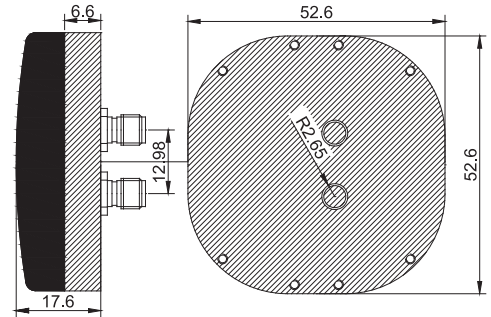
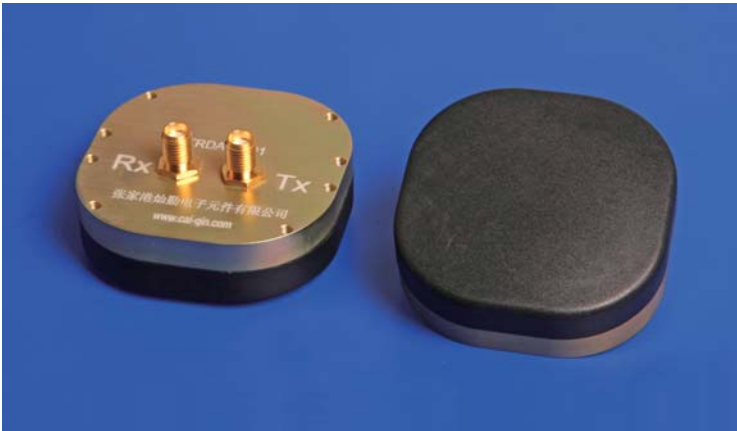


### Dual-frequency antenna for Beidou 北斗一代双频天线



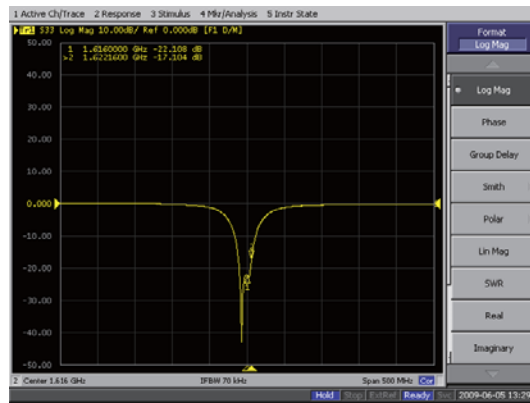
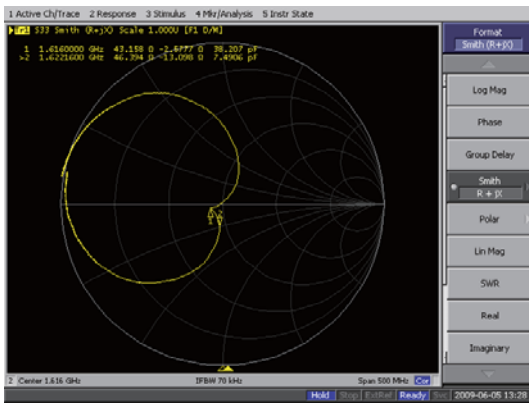
Tolerance: ±0.5 Unit:mm

#### ◆ Principal Parameters(主要参数)

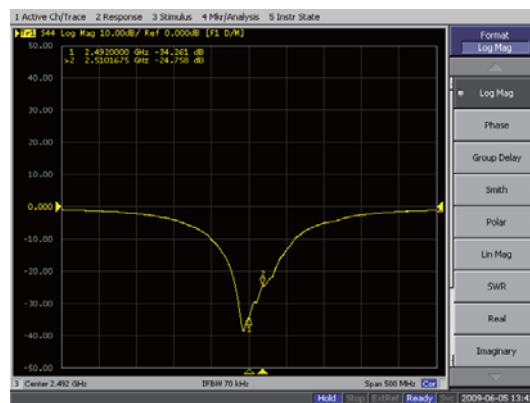
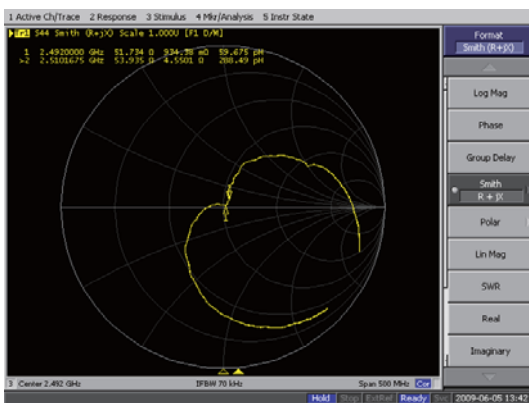
ITEM	Transmit(TX)	Receive(RX)
1.1 Frequency range	1616 ± 5MHz	2492 ± 5 MHz
1.2 Band With(RL=-10dB)	20MHz min.	100 MHz min.
1.3 Polarization	LHCP	RHCP
1.4 VSWR	1.5dB max	1.5dB max
1.5 Impedance	50 ohm	
1.6 Axial Ratio	3dB typ.	3dB typ.
1.7 Gain at Zenith	4dBi typ.	4.5dBi typ.
1.8 Isolation	25dB min.	30dB min.
1.9 Beam width(3dB)	110° ± 10°	100° ± 10°

#### Typical Characteristic (波形特性)

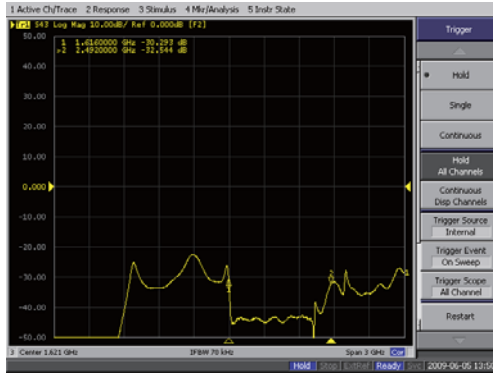
##### TX Smith Chart & Return Loss



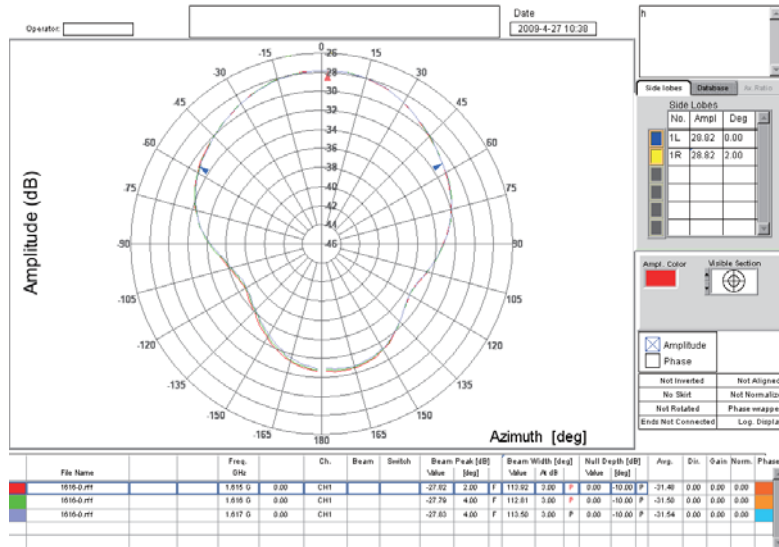
##### RX Smith Chart & Return Loss



### TX & RX隔离度(Isolation)



### TX Radiation Pattern



### RX Radiation Pattern

